

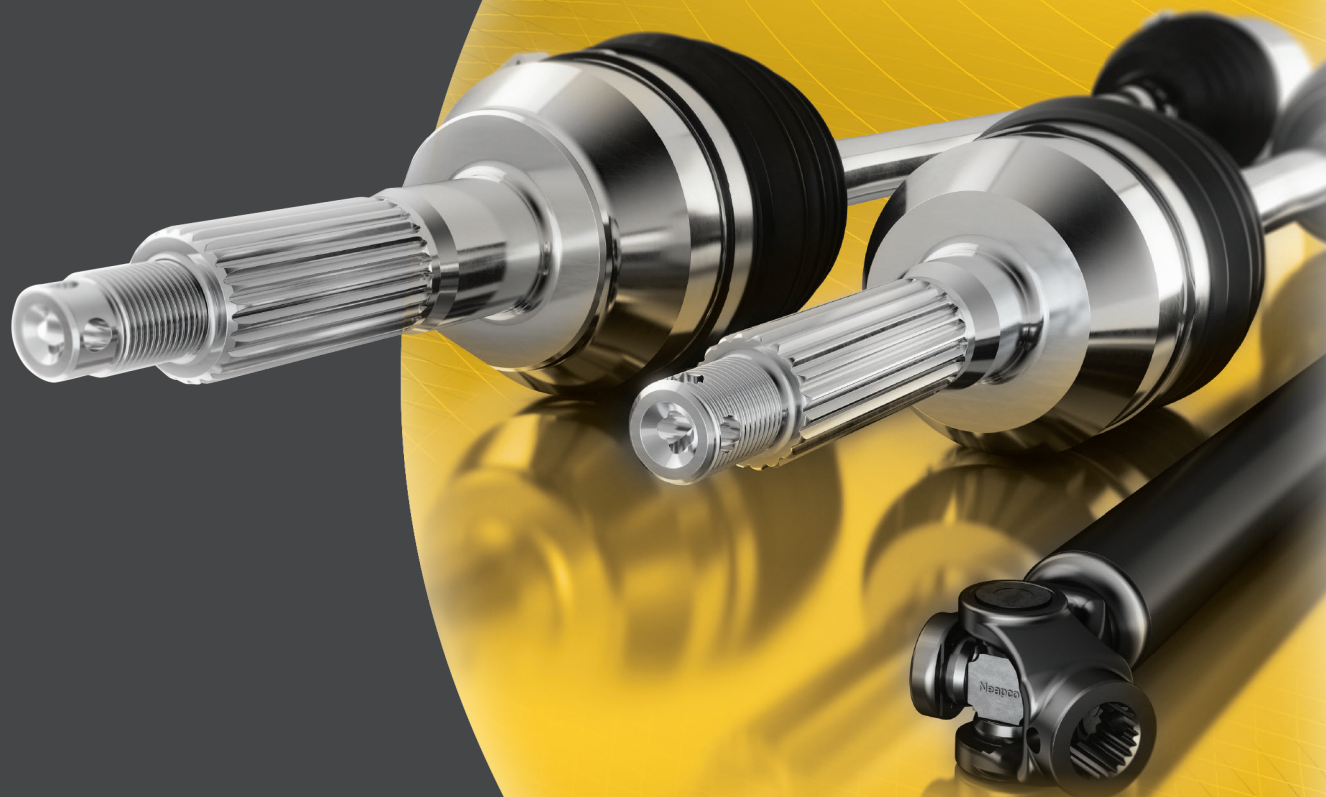


## Genuine Neapco®

OE Series

### CV Axle Assemblies And Driveshafts For Polaris Applications

OE Supplier. Multiple Applications. Full Assemblies.



Manufacturing Driveline Solutions®  
in the USA Since 1921.

## Demand Genuine Neapco - Here's why

A USA based company since 1921, New England Auto Products Corporation, Neapco, is a world class OE supplier. Neapco's application-specific engineering and data controlled manufacturing processes ensure high quality product and optimal performance for your vehicle.



### CV Axle Assemblies

Don't settle for less than direct fit. Our precise data controlled manufacturing and welding process ensures a perfectly balanced high quality product. To deliver consistent quality and customer satisfaction these assemblies conform to ISO 9001 : 2015 standards. The combination of proprietary manufacturing, in-house testing and validation ensures Neapco products to deliver strength and dependability. All Neapco OE series CV axle assemblies are fully assembled in the USA.

#### SPLINE

- Forged high quality carbon steel
- Precision rolled splines and threads
- Proprietary heat treat process provides optimal strength, durability, and life
- Uses ultra-premium Chemtool® CVJM Molybdenum Disulfide grease for durability and wear

#### SHAFT

- 4140 Chromoly Steel that has been induction case hardened for optimal strength
- Engineered to absorb shock loads to protect the transmission
- Powder coated axle shaft for enhanced protection against the elements

#### BOOT

- Thermoplastic elastomer provides longer life and greater physical range
- Quiet operation
- Enhanced design to keep lubricants in and contaminants out in harsh environments and temperatures
- Genuine Oetiker® premium stainless steel boot clamps

#### YOLK

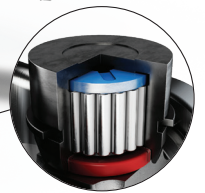
- CNC machined as an exact fit to OE
- Hot forged high carbon steel for optimal strength and durability

#### SHAFT

- DOM (drawn over mandrel) tube provides more exact ID and OD values
- Provides a higher strength ratio, better balance, consistent wall thickness, increased durability, and longer life
- Computer controlled robotic welding ensures a perfect weld every time

#### U-JOINT

- Lubed for life, and manufactured to provide reliable performance at high angles
- Glass reinforced nylon thrust washer for reduced noise and vibration
- Triple lip seal designed to provide premium protection from the elements



### Driveshafts

Make sure your Polaris vehicle has the driveshaft strength to handle your workload by choosing a genuine Neapco OE series product. All Neapco Driveshafts are Autophoretic coated to provide superior corrosion resistance. Driveshafts are tested and validated in-house to ensure strength and reliability.

\*Oetiker® is a registered trademark and property of Oetiker. Chemtool® is a registered trademark and property of Chemtool Incorporated.



# Application Quick Reference Chart (Most Popular Applications)

\*For specific application, product, and assembly details including yolks, shafts, and u-joints visit [NeapcoParts.com](http://NeapcoParts.com).  
 Also see product bulletin: Bul-Prod-819-001REV2. Available at [Neapco.com/ATV](http://Neapco.com/ATV)

## CV Axle Assemblies

Neapco Part #	OE Interchange (for reference only)	Quick Reference Application*Interchange (for reference only)
NOE-89-3233-A	1333233	2014 Ranger 800 & Ranger 800 Crew Models*
NOE-89-2947-A	1332947	2014-2017 Ranger, ACE, & RZR Models*
NOE-89-2935-A	1332935	2011-2014 Sportsman & Hawkeye Models*
NOE-89-2895-A	1332895	2011-2014 Ranger 900 Models*
NOE-89-2894-A	1332894	2011-2014 Ranger 900 Models*
NOE-89-3275-A	1332275	2015-2017 Sportsman Models*
NOE-89-2873-A	1332873	2011-2016 Sportsman & Scrambler Models*
NOE-89-2952-A	1332952	2012-2017 Ranger 6x6 Models*
NOE-89-2938-A	1332938	2011-2015 Sportsman 800 Models*
NOE-89-2825-A	1332825	2012-2014 RZR 4 900 & RZR XP Models*
NOE-89-2884-A	1332884	2011-2014 RZR 800 Models*
NOE-89-2883-A	1332883	2011-2014 RZR & Ranger Models*

## Driveshafts

Neapco Part #	OE Interchange (for reference only)	Quick Reference Application*Interchange (for reference only)
NOE-10-2951-A	1332951	2012-2017 Ranger & RZR Models*
NOE-10-3271-A	1333271	2014 RZR XP 1000 & RZR XP 1000 INTL Models*
NOE-89-3272-A	1333272	2014 RZR XP 1000 & RZR XP 1000 INTL Models*
NOE-10-3443-A	1333443	2016-2017 RZR XP & XP 4 Turbo and INTL Models*
NOE-10-3445-A	1333445	2011-2014 Ranger 900 Models*
NOE-10-3447-A	1333447	2016-2017 RZR XP & XP 4 Turbo and INTL Models*
NOE-10-2996-A	1332996	2012-2016 MRZR 4, RZR 4 900, & RZR 4 900 XP Models*
NOE-10-2997-A	1332997	2012-2016 MRZR 4, RZR 4 900, & RZR 4 900 XP Models*
NOE-10-2994-A	1332994	2012-2015 MRZR2, RZR 900, & RZR 900 XP Models*
NOE-10-2993-A	1332993	2012-2015 MRZR2, RZR 900, & RZR 900 XP Models*
NOE-10-3350-A	1333350	2015-2018 RZR XP 1000 & Polaris General Models*
NOE-10-3441-A	1333441	2016 Polaris General 1000 EPS (R27) Models*



## Driven to Deliver.

---

- Trusted OEM supplier
- Proven performance
- Aftermarket experts
- World-class testing and engineering
- Data-controlled manufacturing
- Industry-leading product coverage and inventories
- Unmatched service and support

Demand Genuine Neapco Products



[Neapco.com/Aftermarket](https://Neapco.com/Aftermarket)  
E-Catalog: [NeapcoParts.com](https://NeapcoParts.com)

NDAG-Polaris-092020  
© Neapco Holdings, LLC 2020  
Printed in USA